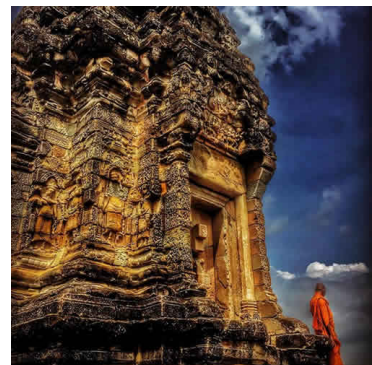
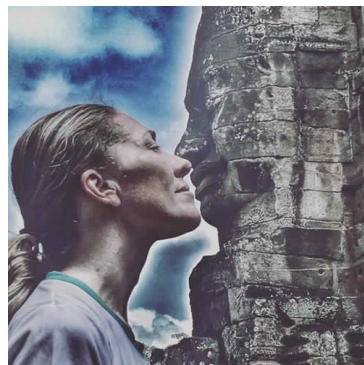


Sports Broadcaster Takes on New Sporting Challenge



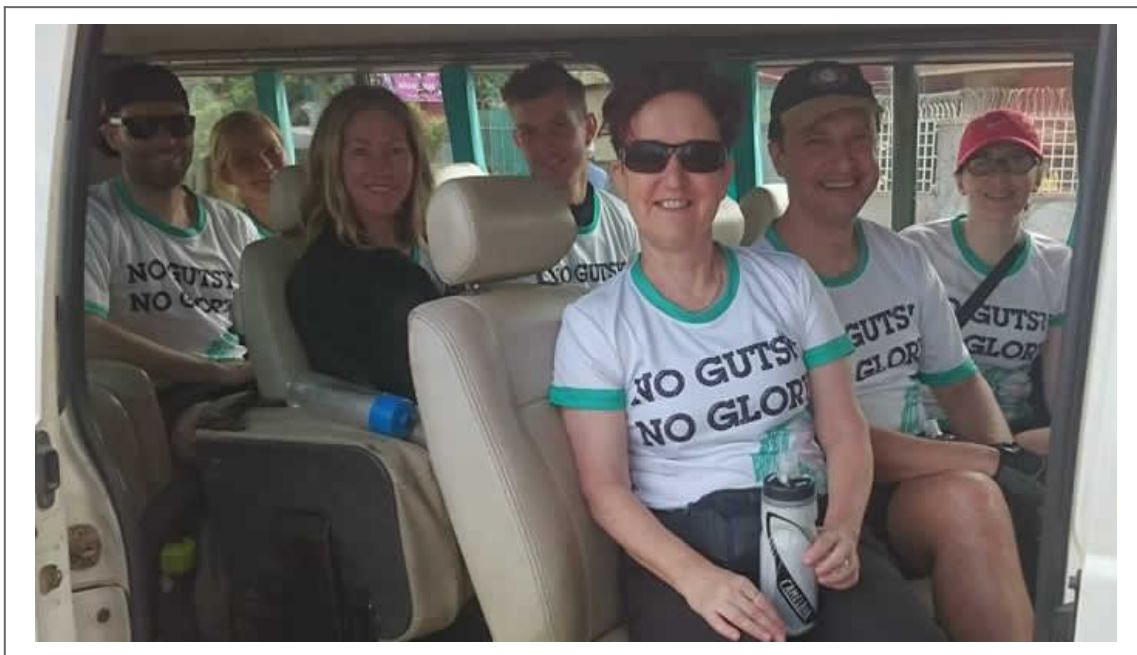
Specialised Therapeutics Australia (STA) has a particular interest in pancreatic cancer and is committed to supporting efforts to advance understanding and improve clinical outcomes in this disease.

Testimony to this commitment, we recently sponsored well-known television personality and sports broadcaster Tiffany Cherry to participate in the GI Cancer Institute's 'Gutsy Challenge' - a seven day cycling challenge across Cambodia to raise awareness and vital funding for Australian research into GI cancers.

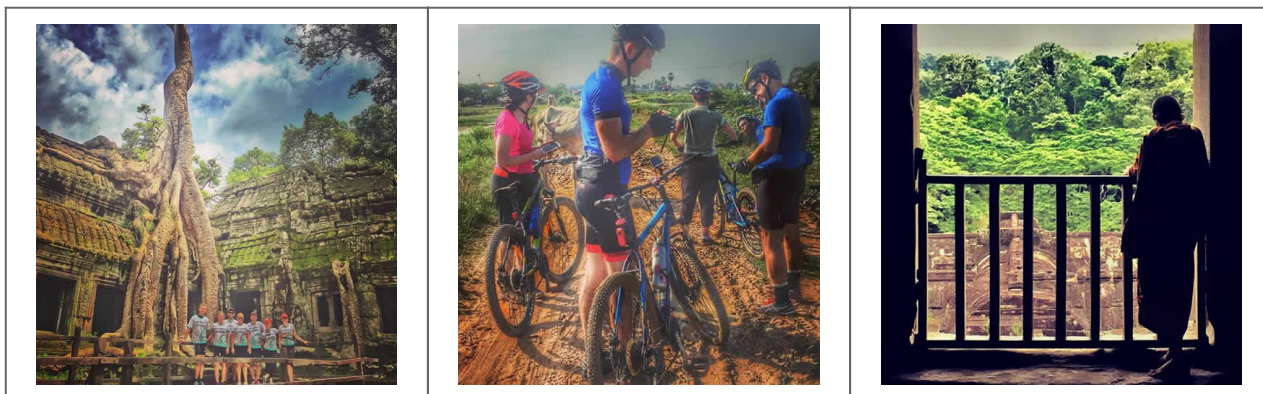


Monies raised by our rider Tiffany are being specifically directed into a fund for Australian pancreatic cancer research.

Tiffany rode as part of a cycling team including oncologists, cancer survivors and others who have been touched by GI cancers.



STA shared highlights of Tiffany's Cambodian journey on our LinkedIn page. She interviewed others in her group and shared their stories. We encourage you to follow STA and like and share our posts by [clicking here](#).



STA was proud to support this fantastic initiative. For more information about the GI Cancer Institute [click here](#).

